



**DOCUMENT  
LOGISTIX**  
MAKING WORK FLOW

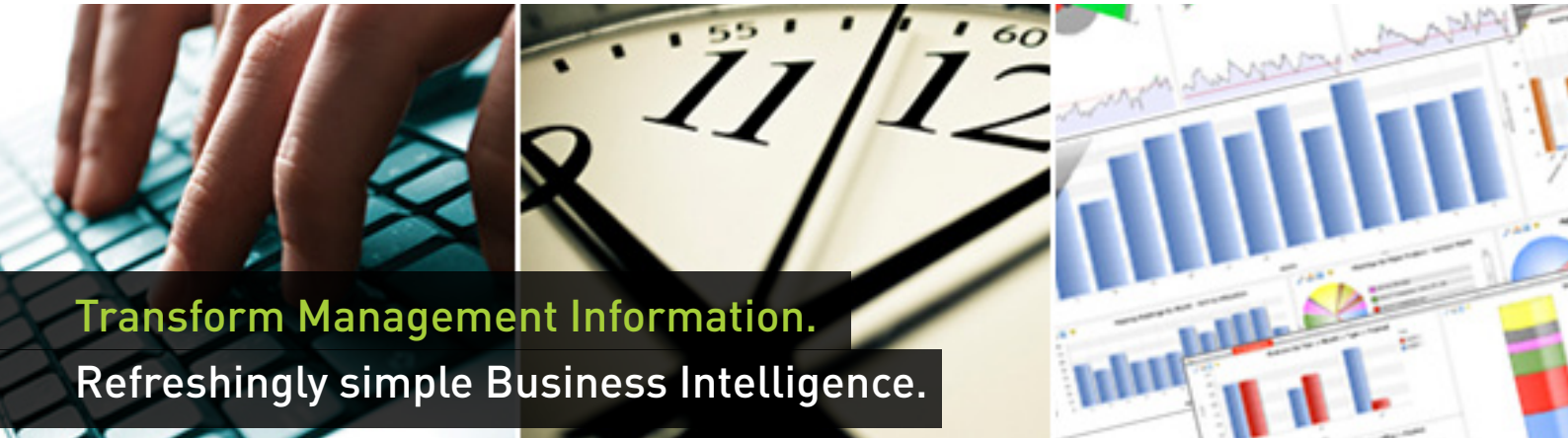
8 Copperhouse Court, Caldecotte  
Milton Keynes, MK7 8NL

t: +44 (0) 1908 366 388

f: +44 (0) 1908 760 672

e: [info@document-logistix.com](mailto:info@document-logistix.com)

w: [www.document-logistix.com](http://www.document-logistix.com)



**Transform Management Information.**  
**Refreshingly simple Business Intelligence.**



Document Logistix has selected panintelligence dashboard as the management information tool of choice to complement Document Manager.

### Web based – Real Time – Graphical – Cross Functional

The dashboard is a browser-based application that allows users to access real-time data quickly and present it in customisable and visually appealing charts, tables and speedometers.

Track your KPIs, get trend alerts and drill down to the underlying data or documents to examine issues and compare over time.

Dashboard provides a top down view of your business data allowing you to cut through complexity quickly to make proactive, timely and informed business decisions to improve performance. You can choose to receive instant alerts if a KPI threshold is crossed - for good or bad.

The dashboard also allows you to have a single, consolidated view of all your disparate management data, bringing together information from multiple sources including: Document Manager, finance and accounting software, HR, payroll, CRM, Service Desk, spreadsheets and ERP.

Accessible from anywhere, including mobile devices, dashboard offers genuine insight to business users and front line staff, and promotes collaboration across the organisation.

The dashboard provides a simple, intuitive user interface requiring little or no training. End users can create their own dashboard layouts simply by dragging and dropping charts onto the page, while creating new charts is as simple as dragging the data columns required onto the chart designer panel.

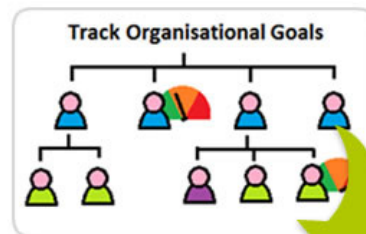


**Easily filter the charts to the data you're interested in, Department, Product, Customer etc...**

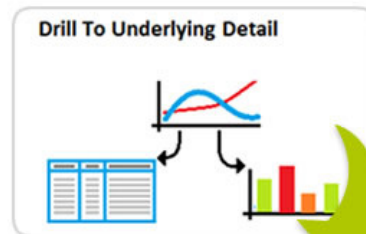
**Automatically apply filters based on the user, by Department for example.**



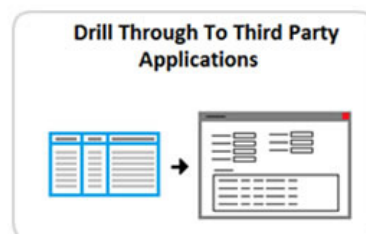
**When KPI targets are breached, automatically alert the key people to take remedial action.**



**Set targets at company, divisional, departmental or individual levels. Identify problem areas or adjust workloads as needed, in real time.**



**Drill down from top level numbers to see the underlying data, right down to individual transactions or records, like order data or issue logs.**



**Open the underlying application screens to view the source of the issues. Open Documents or Folders in Document Manager, Invoices in Finance systems, etc.**